



Sand-Filled Flood Fighting System

PERMASHIELD™



A fillable, multi-cell barrier system, designed for long-run applications that can be stacked to any height.

When filled with sand, Permashield's patented trapezoid shape redirects lateral water pressure downward, holding back floodwaters and resisting rolling and sliding. Can be easily stacked to almost any height and sections can be strapped together with a 3000lb tensile strength nylon strap to build one continuous flood wall.

Permashield has been rigorously tested by the USACE and is a proven stand-alone flood fighting barrier. The heavy duty, woven polypropylene coated fabric is highly resistant to damage from debris impacts and is resistant to contamination and seepage into the bag contents. If damage occurs, the design isolates damage to the impacted cell.

ARMY CORPS OF ENGINEERS
TESTED & RECOMMENDED

Applications

Flood Protection | Cofferd Dam | Levee Strengthening | Dune Stabilization



4' High Waterfront Protection, Peoria, IL



Duke Energy, 8' Protection Height

FEATURES

Mounting Hangers & Installation Sled with Hopper Speed Up Deployment



Permashield cells are loaded into sled using mounting hangers and expand out to open as the cells are filled using attached hopper.



Trapezoidal

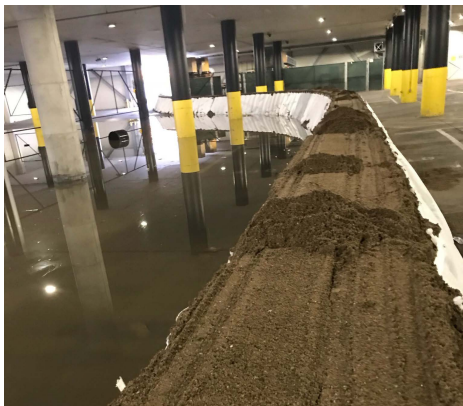
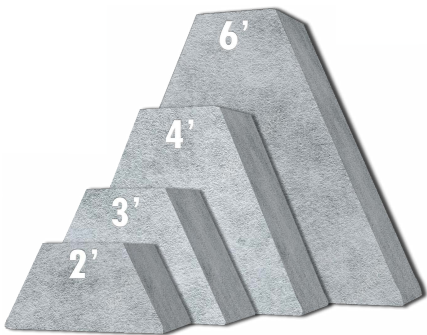
Shape Engineered to Hold Back Water



Stable

Doesn't Move Under High Pressure

Sizing Options
SOLD IN 50' LONG SECTIONS



Stackable

Bags Layered To Reach Any Height



Custom Length

Can Be Connected For Long Runs

HEIGHTS

LENGTH

MATERIAL

2', 3', 4', 6' Stack to Any Height

Connectable 50' Runs

Woven Polypropylene-Coated Fabric

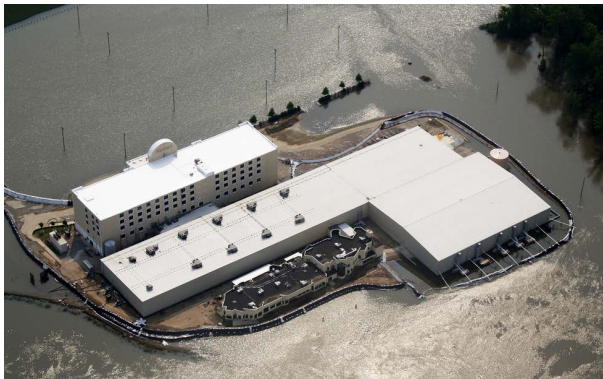


Impermeable

Watertight From Seepage & Contamination



Roadside Levee Strengthening, KY



Harlow's Casino, MS. 7.5' of water for 31 days.

