

PROTECTION
FOR THE UNEXPECTED



Flood Barriers | Floodproof Windows | Flood Vents



Table of Contents

WHAT ARE YOU LOOKING FOR?

SERVICES & RESOURCES

- Flood Design Team [4](#)
- FloodSync Alert System [6](#)
- Product Installation [7](#)
- Professional Education [8](#)
- Flood Insurance Review [9](#)

DEPLOYABLE FLOOD SYSTEMS

- Mega Flood Logs [10](#)
- Flood Shields [12](#)
- Flood Planks [14](#)

PASSIVE FLOOD SYSTEMS

- Horizontal Lifting Automatic Barrier [16](#)
- Passive Vent Barrier [18](#)
- Vertical Lifting Automatic Barrier [20](#)
- Floodproof Windows [22](#)
- Glass Flood Walls [24](#)

POINT-OF-USE FLOOD SYSTEMS

- Watertight Doors [26](#)
- Flood Gates [28](#)
- Industrial Flood Gates and Doors [30](#)
- Watertight Hatches [32](#)
- Roller Curtain Flood Doors [34](#)

PERIMETER FLOOD SYSTEMS

- Modular Perimeter Flood Barrier [36](#)
- Standard Water-Filled Interlocking Barrier [38](#)
- Water-Filled Tube Flood Barrier [40](#)
- Semi Water-Filled Interlocking Flood Barrier [42](#)
- Trapezoidal Sand-Filled Flood Barrier - Long [44](#)

FLOOD VENTS

- Flood Vents [46](#)
- Multi-Frames [48](#)
- Accessories [49](#)



Floodproofing Design & Turnkey Supply Services

ABOUT FLOODPROOFING.COM

We provide flood protection products, education, & support that follow all of the latest regulations.



We sell wet & dry solutions designed to meet the needs of residential & commercial projects.



From pre-bid planning & pricing, to expert product selection & supplying authorized installers, we ensure jobs are done right.



We help you navigate various floodplain codes & regulations to ensure design compliance.

1 (800) 507 0865 | info@floodproofing.com

The Flood Design Team

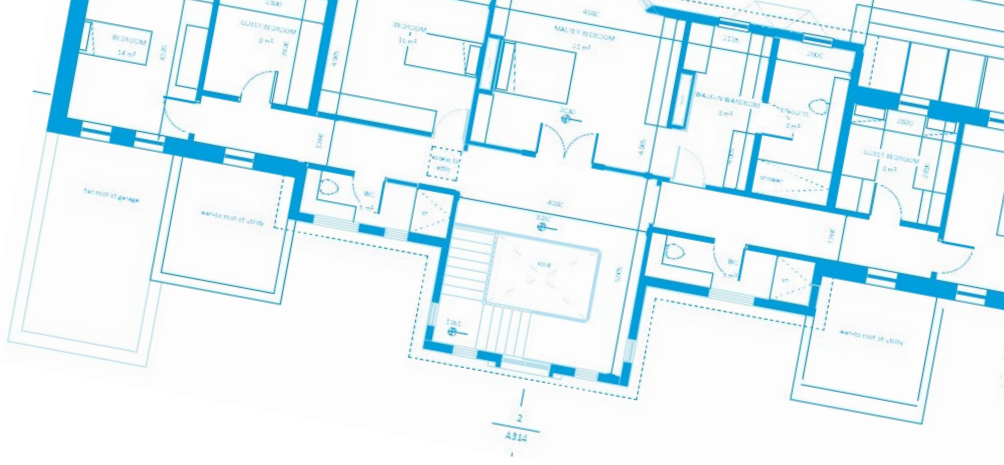
STREAMLINING THE PROJECT PROCESS

Our in-house team of Certified Floodplain Managers and Engineers have decades of experience and can help you navigate the complex codes and standards associated with building in a floodplain.

We'll analyze your unique project, taking the time to review your budget and find the perfect solution from our portfolio of floodproofing products. Our design analysis contains custom 3-part specifications, product recommendations, take-offs and schedules giving you everything you need to know to move forward with your project. We help you improve timelines by alleviating the complicated issues that arise, avoiding the bottleneck caused by adding flood protection to your design later in the game. This entire service is provided complimentary so you can focus on other aspects of your design, knowing a knowledgeable, experienced team handled your floodproofing needs from start to finish.



FLOOD DESIGN TEAM



WHAT'S INCLUDED IN YOUR Design Analysis



The Best Solutions
For Your Project



Federal, State &
Local Code Help



Custom 3-Part
Specifications



Transparent Timelines
& Deliverables

EASILY COMPARE

Features, Storage & Deployment

Send us your project plans, & we'll provide a free, in-depth analysis with guidance on the best floodproofing solutions for your commercial or residential project.



SAVE TIME

So you can focus
on other tasks

STAY ON BUDGET

No surprises or budget
concerns

PEACE OF MIND

Knowing the job will
meet building codes

SMOOTH PROCESS

No design hold ups
or bottlenecks

Send Your Plans

floodproofing.com/plans or plans@floodproofing.com

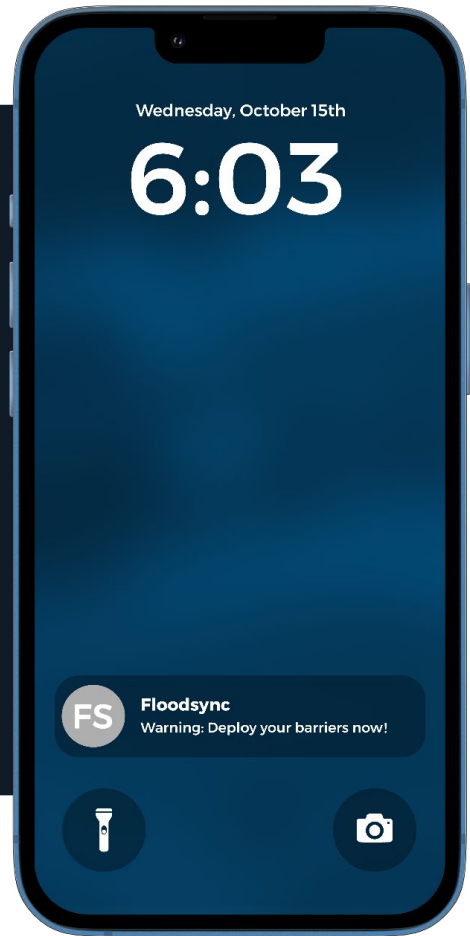


INTRODUCING:

FloodSync

Know your risk & when to deploy

Be alerted to the potential height of floodwaters against your building, letting you know when to deploy your flood protection system so you can secure your structure & assets.



Flood Risk Response Features

From early warnings to full-scale emergency response

24-7 Monitoring & Advanced Warnings

Receive forecast & flood risk notifications with actionable alerts.

Hyperlocal Data Set to Your Location

Custom models & trigger points you can't get from standard weather apps.

Deploy Correctly & Effectively

Help guide staff in the proper deployment of your flood protection system.

Custom Interactive Dashboard

Central location for your flood mitigation plan including:

- ◆ Building & Staff Information
- ◆ Shop Drawings & Barrier Photos
- ◆ Deployment Training
- ◆ Emergency Response Plan
- ◆ Warranty & Insurance Info
- ◆ Inspections & Maintenance

Get Alerts Now

info@floodproofing.com or 1 (800) 507-0865

In Partnership With Floodproofing.com & Applied Weather Associates

Get Proper Flood Mitigation Installation

DONE RIGHT, THE FIRST TIME

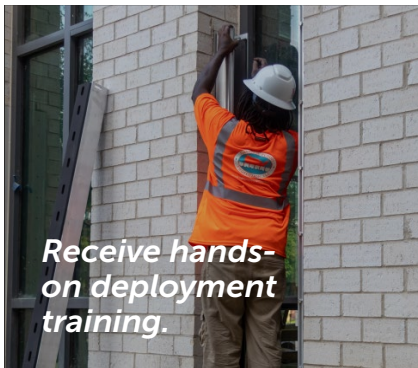
Using installers unfamiliar with flood protection can lead to added costs, wasted time, and faulty installation. With thousands of high-profile installs in all 50 states and dozens of highly trained technicians, our installation team can give you peace of mind that your solution will function as intended when a flood event occurs.



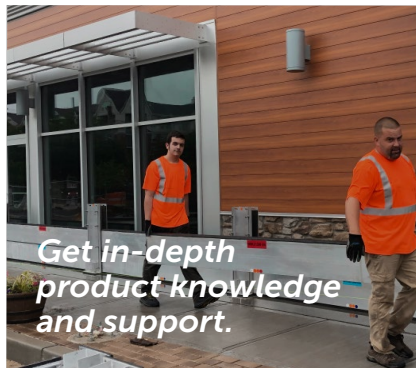
Save time and costs to focus on other project aspects.



Reduce risk with proper, professional installation.



Receive hands-on deployment training.



Get in-depth product knowledge and support.

Plan Your Installation

install@floodproofing.com or 1 (800) 507-0865

What's Included

Site Visit

Verifies dimensions & conditions. Receive a detailed site report on potential conflicts & modifications.

System Installation

Installed per manufacturer's specs & approved shop drawings.

Breakdown & Storage

System is stored in client's designated storage location.

Deployment Training

On-site tutorial for all clients & staff ensuring proper usage.

CLOSEOUT PACKAGE

Opening Schedule

Shows each flood barrier deployed and not deployed.

Deployment Instructions

Step-by-step for each opening and product.

O&M Manual

Manufacturer guidelines for operation and maintenance.

Installation Warranty

one year warranty on product installation

ADDITIONAL SERVICES

Site Modifications

Annual Maintenance Inspection

Building Evaluation



PREFERRED
EDUCATION
PROVIDER

CFM ASFPM
EDUCATION
PROVIDER

Professional Education

LUNCH & LEARNS OR WEBINARS

We have multiple floodplain design courses that can be taken online or given in person.

We've spent many years studying the science of flood mitigation and the effects of flood waters on a poorly protected structures. We instruct and educate Architects, Builders, Certified Floodplain Managers, Code Officials, Engineers, Insurance Agents, Realtors, and Surveyors.

SCHEDULE A LUNCH & LEARN OR WEBINAR ceu@floodproofing.com

Topics We Cover

- Floods and potential hazards to buildings
- FEMA, NFIP, ASCE, ICC, and Building Codes
- Differences between wet & dry floodproofing
- Differences in engineered & non-engineered openings
- Active vs. passive solutions & impact of ownership
- The role of building compliance in flood insurance rates

Complementary Flood Insurance Review

RECEIVE THE LOWEST POSSIBLE PREMIUM

Ensure you're taking advantage of the possible credits and discounts available for your structure.

After our floodproofing assessment helps ensure structures properly protected, our in-house insurance agency, **Risk Reduction Plus Group** (RRPG) can also provide a flood insurance quote, with many options to choose from. With 20+ years of flood risk and damage prevention experience, they can make sure the lowest possible flood insurance premium is achieved.



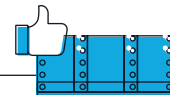
Proper Venting Discount

Flood risk can be reduced by installing flood vents that prevent foundation damage which can lead to flood insurance discounts.



Correct Rating

There are many nuances to flood insurance. We can make sure projects or properties are rated correctly & receiving the lowest premium possible.



Dry Floodproofing Credit

It can be difficult to get approved for dry floodproofing credit. Our specialists can help ensure maximum flood insurance savings with the proper credits.

FLOOD INSURANCE QUESTIONS?
insurance@floodproofing.com or 1 (800) 507 0865

Mega Flood Logs

FLOOD PANEL



A customizable, stackable aluminum flood barrier that is a time-tested solution for flood prone locations.

The Flood Log system is designed to be resistant to impact forces & withstand high-velocity water loads. Ideal for uses where higher protection is needed. Meets ASCE & FEMA requirements.

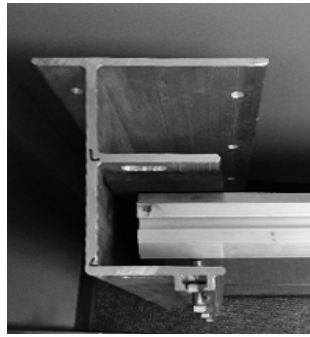


Applications

Storefronts | Select Windows | Doors | Vehicle Access Points



Emergency egress stairs



Offset Bracket Gives Wall Clearance



Flood log storage

FEATURES MADE IN THE USA



User Friendly
Color Coded For Guided Assembly



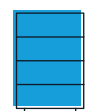
Durable
Aluminum Support Posts & Beams To Anchor Systems



Versatile
Engineered to Accommodate Slopes of 20°



Custom Sizes
Dimensions to Fit Your Needs



Storage Solutions
Custom Rack Configurations Available

STACKABLE "C" POSTS

Flood Logs are strengthened by stackable "C" shaped posts & hollow aluminum beams fitted with watertight rubber seals, ensuring maximum stability & flood protection. Each support post can easily be removed, minimizing aesthetic impact to any building.



MOUNTING OPTIONS JAM | OFFSET | FLUSH



DIMENSIONS

Customizable

MATERIAL

Aluminum Log Panels, Compression Gaskets

IMPACT RESISTANT

Yes

Flood Shield

FLOOD PANEL



A solid, customizable flood barrier for single or double-door applications that can be designed for any site conditions.

The Flood Panel is an aluminum removable flood barrier that is engineered to withstand hurricane forces and floodwater impact. Each panel is custom designed to fit the full Design Flood Elevation and is edged with a neoprene gasket.



Applications

Storefronts | Select Windows | Doors | Vehicle Access Points



The panels attach to the floor and sides of the building opening using hex bolts that fasten to either pre-installed anchors or mounting plates. Panels can be fabricated in any size and configuration with design heights varying from 12" to over 7'.



Can be used in conjunction with Flood Logs in areas where long arrays are required and the ground condition changes in elevation. Panels with a span greater than 4' can be supported by a 45-degree brace or a mid-span support post. Mounting plates can allow for more rapid deployment are available in primed steel or stainless steel and can be painted to blend in with the building color.

CONFIGURATION OPTIONS



Vertical seam and support kickers



Horizontal seams



Custom support columns

Technical Specifications

MATERIAL	Aluminum sheet skin fastened over an aluminum tube frame
SEAL	Neoprene and rubber composite gasket
HARDWARE	304 Galvanized Stainless Steel Anchor Bolts

FEATURES MADE IN THE USA



User Friendly

One size fastening bolt for all mounting locations



Durable

45° Braces Or Mid-Span Support Posts



Mounting Options

Pre-Installed Anchors Or Mounting Plates



Custom Sizes

Dimensions To Fit Your Needs



Versatile

Conforms To Sloped Ground



Flood Planks

INVISIBLE FLOOD CONTROL WALL™



Removable aluminum flood wall custom-engineered for larger applications and higher protection.

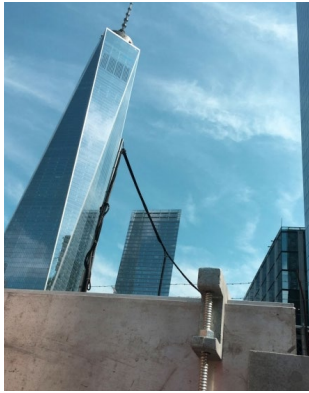
The IFCW system is composed of gasketed aluminum planks and steel posts which are quickly mountable and watertight. It is erected when flooding is imminent and then easily disassembled and stored, leaving an unobstructed view of the area with no protrusions.



IFCW Perimeter System

Applications

Airports | Museums | Riverfronts | Schools | Urban Buildings | Manufacturing Facilities



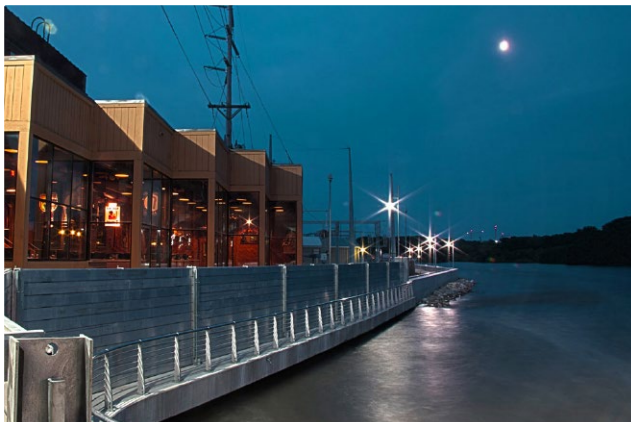
One World Trade Center



Corner Post Installation

The IFCW has extruded aluminum planks that simply stack between the steel supports with a gasket on the “dry” side. During a flood event, the planks fill with water, adding strength and load capacity to the whole system while helping to protect against impact loads.

The IFCW is manufactured and sourced in the United States and has been analyzed and accepted for use by the United States Army Corps of Engineers, and is in use on hundreds of installations across the USA and Canada.



Riverfront Application

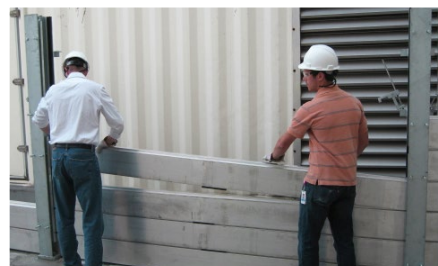


Angle Braces

Due to its stackable design, the IFCW can be deployed in multi-height increments depending on the situation. If the property is expecting minimal flooding or facing time constraints, a lower-height wall could be installed for that instance.



Holman Field, St. Paul Downtown Airport



Deployment In Progress

FEATURES
MADE IN THE USA



Higher Protection

Intermediate Support Design. Heights of 20'+ Possible



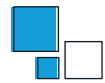
Durable

Support Posts Anchored To Reinforced Foundation



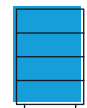
Discreet

Base Plates Minimally Visible. No Protrusions



Customization

Custom Corner Angles. Jogs, Step-Ups, Multi-Heights & Lengths



Storage Solutions

Minimal Storage Space. Optional Pallet & Containers Available.

MATERIAL

Galvanized Steel Posts, Aluminum Planks

PLANK WEIGHT

5.5lb/ft

PLANK LENGTH

Typical 20'

SYSTEM HEIGHT

Up to 20' or More



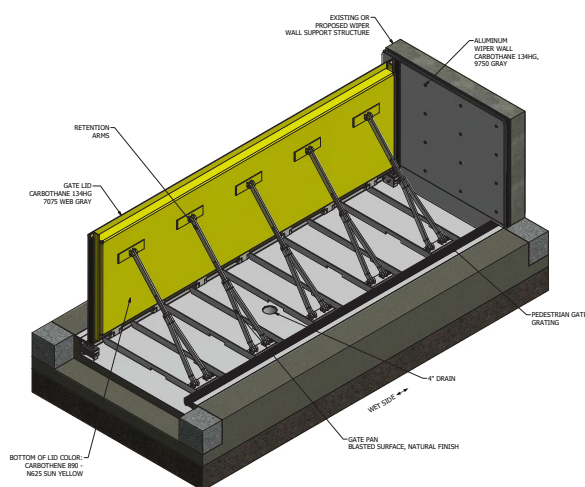
Horizontal Lifting Automatic Barrier

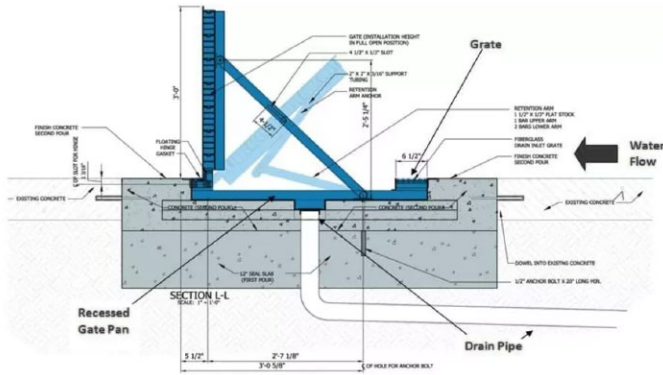
FLOODBREAK®



A low-maintenance, self-clearing automatic flood barrier that remains hidden until activated by floodwater.

With over 2,500 flood barriers installed worldwide, the FloodBreak® flood control system is a passive flood barrier that closes automatically to prevent water entry, activated by rising floodwater. With no reliance on people, power, springs, or mechanical assistance to lift the gate, failure points are eliminated. The systems are low maintenance, self-clearing and don't require any lubrication so they will operate when needed 24/7.





FEATURES
MADE IN THE USA



Always Ready

Does Not Need Manual Activation



Discreet

Remains Underground At Resting Position



No Storage Needed

Remains Hidden Until Activated by Floodwater



No Electric

Operates Without Human Intervention/Electricity

The concept is simple—let the water work against itself to automatically float the buoyant aluminum beam and activate the self-sealing rubber gasket. The higher the water rises, the higher the flood barrier is lifted until it reaches full deployment and is held closed by the hydrostatic pressure. When the water recedes, the flood barrier returns to its recessed location in front of the entryway, allowing vehicle and pedestrian passage to resume.



Technical Specifications

SIZE	No height or width restrictions
SEALS	Ethylene Propylene Diene Monomer
MATERIAL	Marine Grade Aluminum, Stainless Steel Fittings
ANCHOR	Poured Concrete Slab

Applications

Buildings & Garages | Levee & Waterfronts | Flood Walls | Multi-Family | Residential



Loudres Hospital, Binghamton, NY



UTMB Primary Care Back Entrance, Galveston, TX

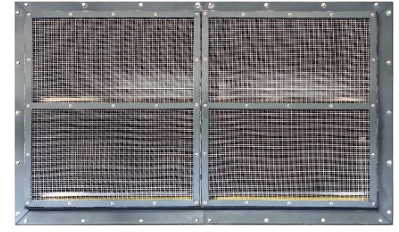


Durable

Long Service Life With Minimal Maintenance

Passive Vent Barrier

FLOODBREAK



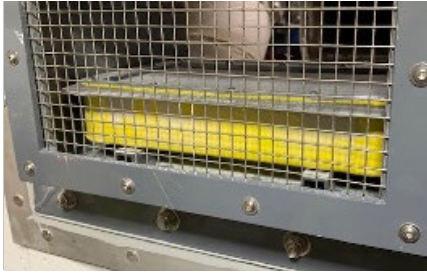
An automatic vent system that allows normal airflow and seals during floods to prevent water intrusion.

FloodBreak's passive vent systems provide 24/7 flood protection for air intake and exhaust vents, ducts, window openings, and vent shafts, whether above or below grade. When flooding occurs, buoyant panels automatically close to seal openings and prevent flood inundation without people or power. Only panels affected by rising water activate, allowing unaffected panels to remain open. Once floodwaters recede, the panels reopen automatically, resuming normal airflow. Needing minimal maintenance, these customizable systems are field-tested in harsh, real-world conditions and fit virtually any opening.



Applications

Critical Facilities | Fan Plants | Air Intake And Exhaust Vents | Ducts | Window Openings



FEATURES
MADE IN THE USA



Always Ready

Does Not Need Manual Activation

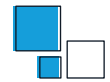


Discreet

Remains Underground At Resting Position

Horizontal Vent System

The horizontal system provides passive, automatic flood protection for wall-mounted vents, fan plants, air intake and exhaust openings, ducts, and windows. This system utilizes buoyant panels and wiper seals to create a watertight barrier. Integrated shelves drain automatically, requiring no human intervention to clear after a flood event. With no size limitation, each system is custom-designed to meet project-specific loads and airflow requirements while delivering decades of reliable, low-maintenance protection.



Custom Sizes

No limitations. Meets project loads and airflow.



No Electric

Operates Without Human Intervention/Electricity



Vertical Vent System

The vertical system is designed to protect underground vent shafts from flash flooding, including hard-to-reach and high-risk locations. Originally developed for the MTA-NYCT subway system, these passive units have been operating successfully for over a decade. Each unit is custom-built and installs by dropping into position within the vent shaft, gravity-hung on an embedded angle frame beneath the grating, no anchoring required. Self-clearing by design, a weep hole at the base of each unit drains water to an existing pump system, allowing the vent to resume normal airflow after a flood.



Durable

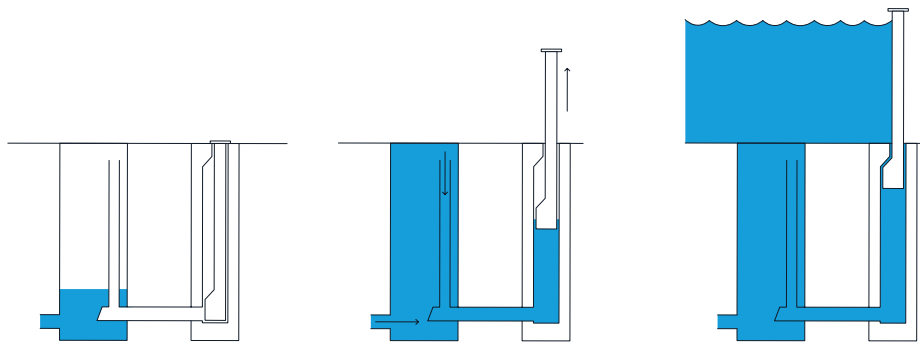
Long Service Life With Minimal Maintenance

Vertical Lifting Automatic Barrier

SELF CLOSING FLOOD BARRIER™



A vertically-lifted barrier that utilizes flood water to lift itself into position to seal off an opening during flooding.



Resting Position

In non-flood conditions, all operational parts are concealed in an underground basin.

Deployed Position

As floodwater rises to a predetermined level, an inlet pipe fills the basin, making the flood wall float up.

Fully Deployed

When the basin is full, an angled support block locks the flood wall into position making it watertight.

HIGH WATER PROTECTION

This flood defense system uses approaching floodwater to raise its barrier, using the problem to create the solution, protecting from heavy rainfall, gales, or rapidly melting snow.



Always Ready

Does Not Need Manual Activation



Discreet

Remains Underground At Resting Position

Applications

Storefronts | Windows/Doors | Access Doors | Entire Perimeter



No Storage Needed

Remains Hidden Underground Until Triggered

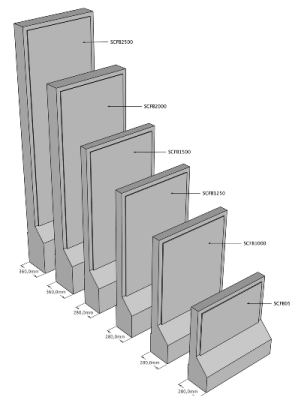


No Electric

Operates Without Human Intervention Or Electricity

Technical Specifications

SIZE	Custom
PANELS	PUR foam core & fiberglass outer layer
SEALS	Long-lasting, durable gaskets
BASIN	Poured Concrete or Steel
ACTIVATION	Pipe Connection, Inspection Pit, Inspection Pit with Pump, Water Runnel, or Water Runnel with Quick Fill System.



User Control

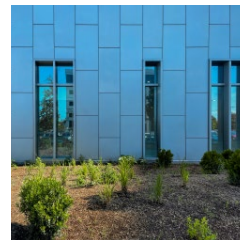
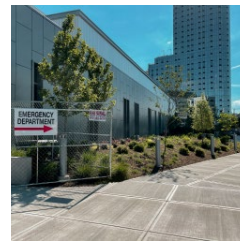
Optional Manual Deployment

Floodproof Window Systems

FLOODPROOFING.COM



Impact-rated, floodproof windows that provide clarity, beauty, + passive protection at all times.



Floodproof windows are passive systems that are always ready to protect from rising flood water + debris impact. They are hurricane impact-rated and tested to withstand more than 10' of water + large missile collision. No storage, installation, or deployment needed before a flood event. Multiple framing options available including customizable shaped systems.



FEATURES
MADE IN THE USA



Framing Options
Factory-Glazed
Configurations



Custom Configurations
Any Shape. Tint &
Print Also Available

Applications

Oversized Storefront Window Solutions | Commercial & Residential Window Systems

Tested To Exceed ANSI/FM 2510 Standards For Impact Up To 1000 lbs



Impact Test on 4' x 6' Flood Window



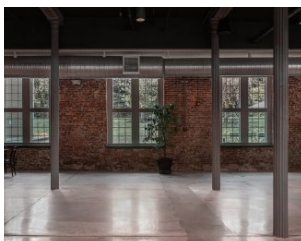
Load Test of 9' of water on 20' x 11' Flood Window



Energy Efficient
Insulated Assembly
Options



Tested
Water & Debris
Impact



Historical Flood Window Application



FL Product Approval
Oversized, Skylights
& Fire Windows



Scientific research & testing
ensures products conform to
highest standards of safety &
property loss prevention.

Glass Flood Walls

FLOODPROOFING.COM



A customizable, glass flood wall that provides passive protection along coastal environments without obstructing the view



Glass Flood Barriers are passive systems with a unique design and multiple options. It's always ready to protect from rising flood water and debris impact and requires no installation before a storm. This barrier can be used for hospitality, government, or commercial buildings near any water or flood source.

FEATURES
MADE IN THE USA



No Storage Needed

Always Remains
In Place



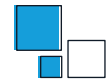
Always Ready

No Need to Deploy
Before Flooding



Enhances The View

Doesn't interfere with
walkway or view

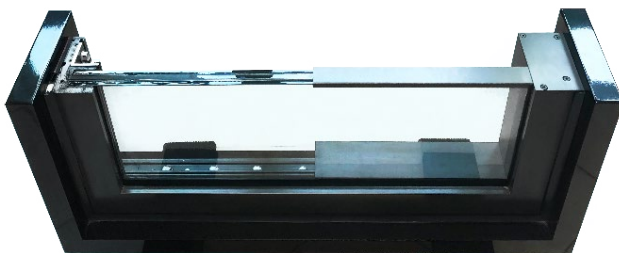


Custom Configurations

Oversized panels
and print options

Applications

Bulkhead & Seawalls | Coastal Properties | Hospitality

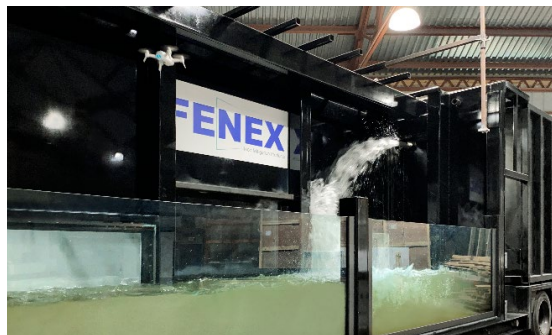


These flood wall systems can be installed with a variety of frame options and can even be designed for use as a handrail. The system also has a tamper-proof cap that protects the glass and inner layer from being exposed to the elements.

Tested to Meet ANSI/FM2510 Standards for Water Loading



4x8' Sections Holding 4' of Water



Filling Custom-Built Test Rig



Tested

Water + Debris
Impact

Commercial Flood Door

MULTIPLE OPTIONS



A pedestrian door that operates as a flood barrier when activated & is perfect for critical infrastructure.

The Commercial Flood Door is internally reinforced and has a mechanical sealing mechanism housed within the frame, giving a tight seal when properly closed. This pedestrian flood door is a passive flood barrier and are ideal for critical infrastructure locations such as mechanical and electrical rooms.



Applications

Egress Doors | Mechanical & Electrical Rooms | Critical Infrastructure



**Tested to ANSI/FM
2510 Standards**

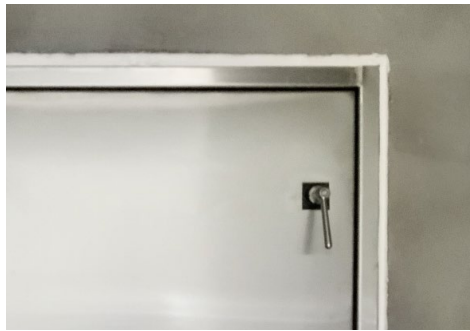


Meets ADA Requirements

The flood door can be manufactured in either aluminum or steel, depending on your needs. Because it looks and operates like any other door, the aesthetic impact is minimal. Choose from many customization options for your door, including standard panic bars, specialized locking hardware, small glass view ports, and more.



**Glass Port, Panic
Bars, & Special
Locks Available**



Door Dog Removable Sealing Latch

Before a flood, each door can be activated in seconds by engaging door dogs on the top and bottom. This creates a tight seal, quickly initiating floodproofing capabilities.



FEATURES MADE IN THE USA



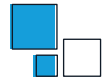
Dual-Function

Operates As A
Standard Door



Color Options

Powder Coat
Paint Available



Customizable

Glass Port, Panic Bars,
& Special Locks



Tested

Hydrostatic
Testing up to 6'



Finish Options

Choose Steel Or
Stainless Steel

Flood Gates

FLOOD PANEL



A permanently installed gate that operates as a flood barrier when closed & is designed for rapid deployment.

Hinged Flood Gates are permanently installed at the opening location and kept open until needed. Once swung shut and locked, an effective seal is created. This barrier option offers a quick reaction time, a critical advantage in the face of a threatening flood event.



Applications

Buildings & Garages | Levee & Waterfronts | Critical Infrastructure | Flood Walls



The system can be custom designed for almost any width and can be fabricated with a single or double leaf configuration. For larger gates, central support wheels can be fitted for safety and ease of deployment. To reduce the aesthetic impact of this barrier, the front surface can be painted or covered in a manner to match the building façade.



FEATURES
MADE IN THE USA



Engineered

Single or double leaf at any size



Point of Use

Operates Normally
As A Gate



Easily Deployed

Close and lock with
one person



Customizable

Paint available to
match facade



Durable

Long Service Life With
Minimal Maintenance

Industrial Flood Gates & Doors



WALZ & KRENZER

Heavily-engineered, industrial-level doors, and gates design for the most complex applications.

From the simplest flood barrier to the most complex high pressure closure, our engineers design your product based on your requirements. Whether you need advanced FEA analysis or 3-D modeling, you can count on a fully engineered, tested product that can fully meet almost any specifications.



Flood Gates Protecting NYC Queens Midtown & Hugh L. Carey Tunnels From Flooding



South Ferry Terminal, NYC Inflatable Gasket Door

Watertight Doors

Custom watertight doors can be supplied with power operation and most can be specially designed for blast, ballistic, shock, vibration, seismic, chemical, tornado, and high pressure requirements. Single & double panel doors are available.



SLIDING
Compact

Horizontal or Vertical



INFLATABLE GASKET
Flush, High Pressure

Button-activated inflation



COMPRESSION GASKET
Raised, High Pressure

Quick Acting or Individually Dogged

FEATURES MADE IN THE USA



Customizable

Engineered To Fit Any Size & Application



User Control

Manual, Full Automation, or Powered

Utilized in Projects For the US Army Corps of Engineers, US Navy, and State Transit Departments



Tested

Meets FEMA, USACE, FM/ANSI 2510 Requirements



Material Options

Aluminum, Mild A36 Steel or 304 & 316 Stainless Steel



Finish Options

Various Paints, No 4 Polish, Or Mill Finish

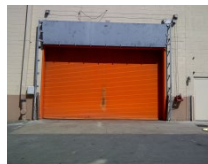
Hinged, Sliding, or Removable Flood Gates

Whether requirements call for permanent, removable, or automatically deploying flood barriers, these custom designed closures provide reliable protection. Closures can be designed to meet FEMA, FM/ANSI 2510, USACE requirements. Project portfolio varies from Museums, government projects, NASA to Nuclear Plants.



SIDE-HINGED
Permanent & Ready

Lipseal, Inflatable or Compression Gasket



SLIDING
Permanent & Compact

Horizontal or Vertical



REMOVABLE
Can Be Stored

Lipseal, Inflatable or Compression Gasket

Watertight Hatches

WALZ & KRENZER



An industrial watertight hatch, custom-engineered for flood protection, featuring manual or powered operation options.

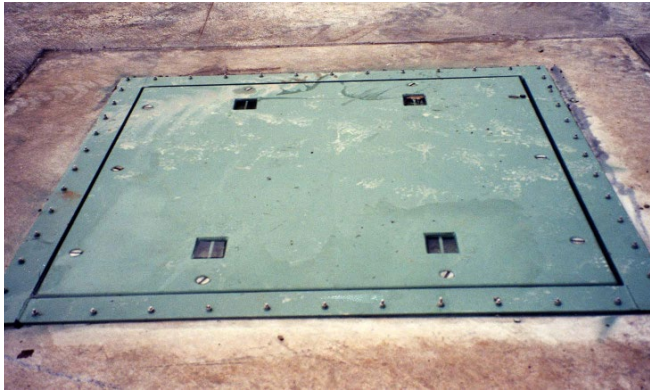
Custom hatches can fit any size and pressure requirement. Additional load factors such as wheel loads and point loads from material handling equipment can also be incorporated. Flush and raised configurations are available and are operable from one or both sides.



Applications

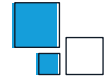
Subfloor Access | Mechanical Areas | Water Treatment Facilities | Pumping Stations

FEATURES
MADE IN THE USA



Any Size, Configuration, or Design Pressure

Hatches are sealed utilizing individual dogs, quick-acting handwheels, or drop bolts. Larger hatches may require mechanical opening assistance like gas springs, coil springs, and counter-weights, although power operation is also an option.



Custom Mounting

Flush or Raised Options



Versatile

Multiple Sealing Options Available



Engineered

No Size or Load Factor Limits



Material Options

Aluminum and Various Steel Finishes



Activation

Power Operation Available

Material Specifications

PANEL & FRAME	Mild steel, stainless steel, aluminum, various high-strength steels
GASKET MATERIAL	Neoprene, Viton, EPDM, silicone, Nitrile, and others
MECHANISM	Above via T-wrench, below via dogs, quick-acting handwheel or panic bar.

Roller Curtain Flood Door

WALZ & KRENZER



An automatic roller curtain door that is activated by oncoming water and secures the opening

The AutoSeal Watertight Roller Curtain Door is the latest technology in flood protection. During normal non-flooding operation, it functions as an everyday curtain door. Once water is sensed by the controls at a pre-determined level, it automatically deploys and secures the opening. Additionally, it can also be easily operated with the push of a button on the side or with a remote control.



WIDTH

23' max

HEIGHT

25' max

DESIGN PRESSURE

1' below top of opening

Applications

Warehouses | Entrance Doors | Storefronts | Garage Doors | Parking Lots

FEATURES
MADE IN TAIWAN



Functional

Operates for every day use



Safety Features

Infrared sensor detects movement



Versatile

Multiple mounting options possible



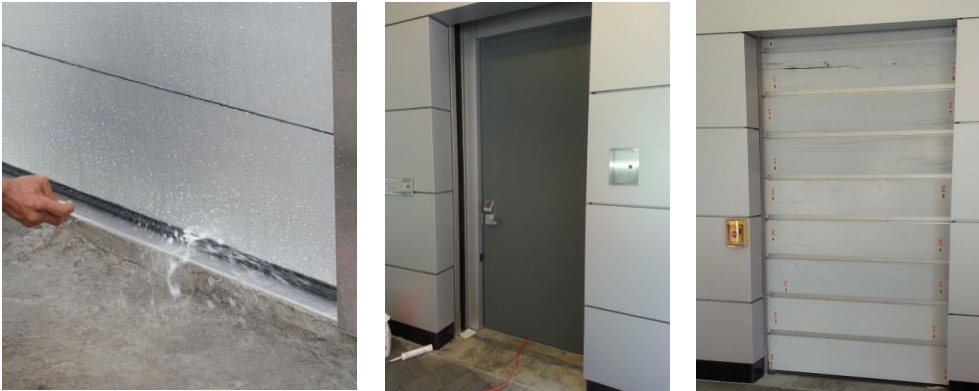
Passive System

Automatically closes upon detecting water



Activation

Motorized by button or remote control



The First Automatic Watertight Roller Curtain Door in the US

Like most standard garage doors, it has an infrared start/stop sensor to avoid closing when an object is in the way. A battery back-up is included for operation during power outages.



The door is constructed from aluminum roller curtain door slates with a stainless steel frame and a flush bottom sill. For installation, there are multiple mounting options, like inside the face of the building, outside the face of the building or inside the jambs.

Material Specifications

PANEL	Custom extruded aluminum shape
FRAME	Stainless steel
CHASSIS	ASTM A-36 steel
GASKET	EPDM foam
FINISH	Extruded aluminum mill finish



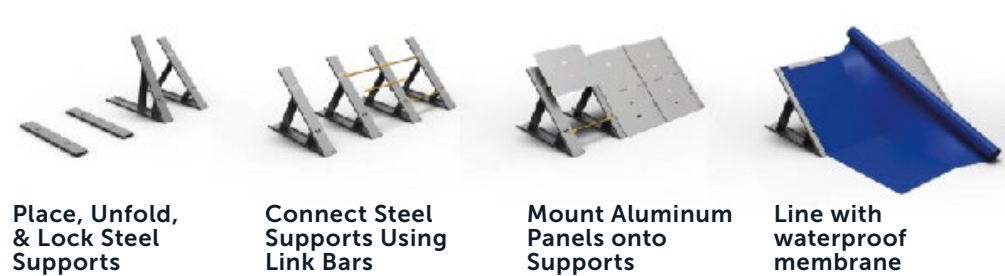
Modular Perimeter Flood Barrier

GEODESIGN BARRIERS



A high-strength, modular barrier system designed to accommodate various obstacles and terrains.

With reinforced high strength steel trusses, diamond plated aluminum panels or sheets, and a waterproof liner, the Geodesign flood barrier is incredibly durable, withstanding debris impact and flooding. This engineered flood barrier provides full height protection that allows for modular setup, compact storage, and quick deployment.



Applications

Flood Protection | Critical Facilities | Cofferdams | Energy Substations | Containment



With over 500,000 linear feet in 24 different countries protected, this FM approved barrier is a reliable, proven solution. Barriers can be set up on any terrain by one person without the use of any tools or machines. Equipped with collapsible supports, this system is delivered in stackable steel crates, facilitating ideal storage and transportation.



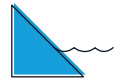
Storage options for each barrier component.

FEATURES
MADE IN SWEDEN



Easy to Deploy

Modular with no fill material



Adaptable

Design conforms to all surfaces



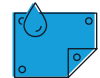
Robust Material

High strength steel and corrosion resistant aluminum



Easily Store + Transport

Collapsible components with stackable crates



Liner Options

High and Low Density Polyethylene



Scientific research & testing ensures products conform to highest standards of safety & property loss prevention.

Heavy Duty



PROTECTION HEIGHT	SECTION WIDTH	BARRIER FOOTPRINT	FOOTPRINT & MAX LINER
48 in	4'	5' 11"	14'
60 in	4'	7' 3"	14'
72 in	4'	8' 10"	22'
84 in	4'	10' 2"	22'
96 in	4'	10' 2"	30'

Industrial



PROTECTION HEIGHT	SECTION WIDTH	BARRIER FOOTPRINT	FOOTPRINT & MAX LINER
24 in	32"	1' 10"	6'
32 in	39"	2' 11"	10'
40 in	39"	3' 9"	10'
48 in	39"	4' 9"	13'

Water-Filled Interlocking Barrier



MUSCLE WALL®



A rapidly-deployed, portable flood barrier engineered to withstand rushing or standing water.



Muscle Wall can replace thousands of sandbags all while being quick, easy, reusable, reliable, & customizable. It is engineered to withstand the immense force of rushing or standing water due to its patented toe design.



Extended Run of Muscle Wall

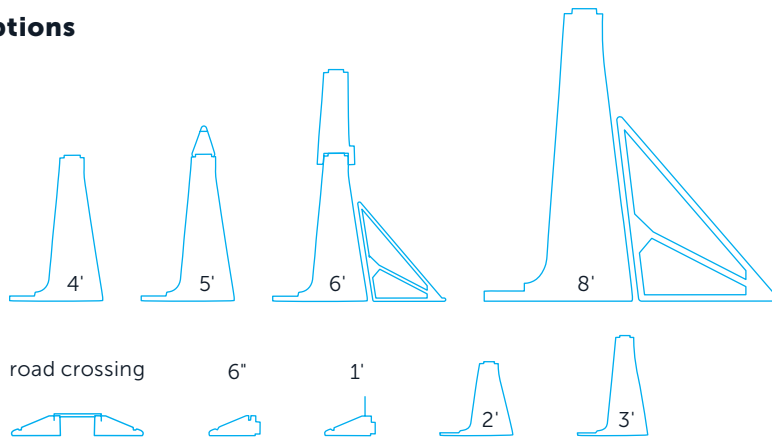


Muscle Wall Protecting Battery Park in New York City

STRONGER THAN STRONG

Water pressure forces the toe downward anchoring the wall to the ground while containing & diverting water. Unlike sandbags, it is rapidly deployed, portable, & easily disassembled. Once sections & liner are in place, fill with water.

Sizing Options



Muscle Wall Protecting Battery Park in New York City (Using Wrap Liner Option)

Applications

Flood Control | Containment | Stormwater Management | Road Crossings

FEATURES MADE IN THE USA



Standard Sizes

Ready to Ship & Deploys With Ease



Interlocking

Tongue & Groove
Allows 15° Max Bend



Flexibility

Corner Provides
90° Turns



Stackable

Easily Stacked
for Storage



Liner Options

Versatile Wraps For
Multiple Surfaces



Scientific research & testing
ensures products conform to
highest standards of safety &
property loss prevention.

Water-Filled Tube Barrier

TIGER DAM™



A long, flexible tube that can quickly be joined end-to-end, stacked to various heights & filled with water.

This system forms a barrier to protect buildings, properties and any other structures prior to a flood. Each tube can be filled in minutes with a 2-inch pump, a fire hydrant or a garden hose. The tubes are capable of being stacked up to a maximum of 32 feet high and linked together seamlessly for miles. They can be virtually any length and take any shape.



Applications

Flood Protection | Critical Facilities | Commercial & Residential | Road & River Crossings | Containment

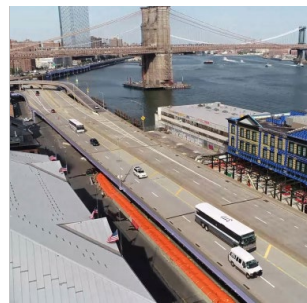
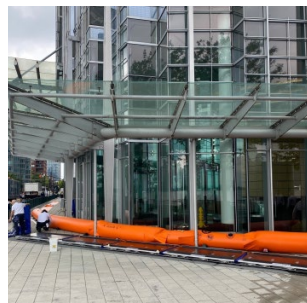
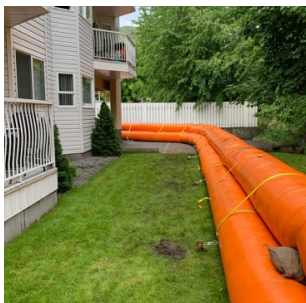


The dams are filled individually and secured with straps and anchors if needed. After the flood waters have receded and the dam is no longer required, the system can be drained, cleaned and packaged for storage. The Tiger Dam™ flood protection system has been thoroughly tested at The University of British Columbia, and is Platinum Certified by the U.S. Army Corp. of Engineers, the Association of State Floodplain Managers, and FM Approvals.



STANDARD HEIGHTS	LENGTH	MATERIAL
18", 24", 30", 36" & 42" H	50' Sections	Heavy duty double-coated nylon/PVC

CONNECT UNLIMITED SECTIONS TOGETHER



FEATURES MADE IN THE USA



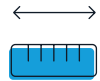
Deploy Quickly

Rapid deployment when filled using fire hydrant



Flexible

Can be turned at any angle to fit any shape



Connectable

Can be connected to fit any length



Stackable

Buildable System. Engineered to 32 ft



Efficient

Reusable & Cost Effective



Scientific research & testing ensures products conform to highest standards of safety & property loss prevention.

Semi-Filled Interlocking Barrier

FLOODSTOP



A long-run flood barrier with corner & wall connections & alternating, self-filling pods that speed up deployment.



The FloodStop Barrier is a unique, rapidly deploying flood barrier system. Pods are easily connected together using interlocking keys, ultimately creating a flexible barrier of any length. When assembled, some pods are pre-filled with the remainder filling with floodwater as levels rise.



Applications

Flood Control | Stormwater Management | Road Crossings | Containment



This system can be easily assembled by a single person. Before a flood, simply place all pods in the desired position, insert the connection keys, and fill one out of every third unit with water. Some configurations require every other unit to be pre-filled. The remaining empty pods will fill and drain as floodwaters come and recede. After a flood event, pods can be disconnected and stored for later use, unlike sandbags.

Each System Uses a Combination of Self-Fill & Pre-Fill Units



25"

48"L x 25.5"H x 25.5"D
 Built in Connector Key with reduced deployment time
PROTECTION UP TO 20"



36"

40"L x 36"H x 30"D
 Taller model with separate Connector Key
PROTECTION UP TO 25"



FEATURES
MADE IN THE USA



Standard Sizes
 Ready To Go & Deploy With Ease



Stable
 Self-balancing. No Bolting Required.



Semi Self-Filling
 Alternating Barriers Fill & Empty Themselves



Linerless
 Barriers Have Gaskets & Don't Require A Liner



Versatile
 Allows For Bends, Corners, & Wall Connections

Wall Connections & Cornering

Barrier to Barrier and Wall Options Available





Long Sand-Filled Flood Barrier

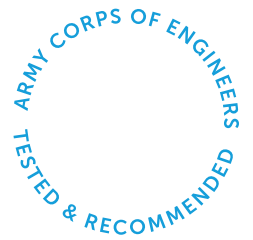
PERMASHIELD™



A trapezoidal, multi-cell barrier system, designed for long-run applications that can be stacked to any height.

When filled with sand, Permashield's patented trapezoid shape redirects lateral water pressure downward, holding back floodwaters and resisting rolling and sliding. Can be easily stacked to almost any height and sections can be strapped together with a 3000lb tensile strength nylon strap to build one continuous flood wall.

Permashield has been rigorously tested by the USACE and is a proven stand-alone flood fighting barrier. The heavy duty, woven polypropylene coated fabric is highly resistant to damage from debris impacts and is resistant to contamination and seepage into the bag contents. If damage occurs, the design isolates damage to the impacted cell.



Applications

Flood Protection | Cofferd Dam | Levee Strengthening | Dune Stabilization



4' High Waterfront Protection, Peoria, IL



Duke Energy, 8' Protection Height

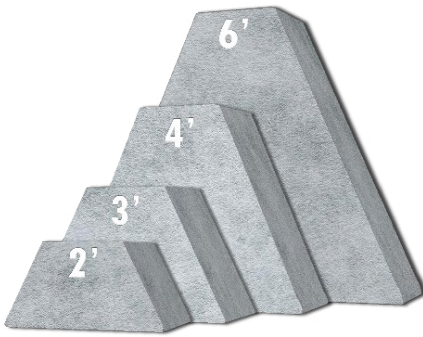
Mounting Hangers & Installation Sled with Hopper Speed Up Deployment



PermaShield cells are loaded into sled using mounting hangers and expand out to open as the cells are filled using attached hopper.

Sizing Options

SOLD IN 50' LONG SECTIONS



HEIGHTS

2', 3', 4', 6' Stack to Any Height

LENGTH

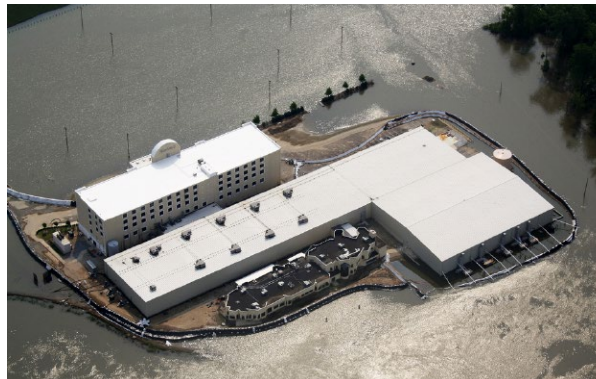
Connectable 50' Runs

MATERIAL

Woven Polypropylene-Coated Fabric



Roadside Levee Strengthening, KY



Harlow's Casino, MS. 7.5' of water for 31 days.

FEATURES MADE IN THE USA



Trapezoidal

Shape Engineered to Hold Back Water



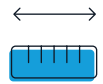
Stable

Doesn't Move Under High Pressure



Stackable

Bags Layered To Reach Any Height



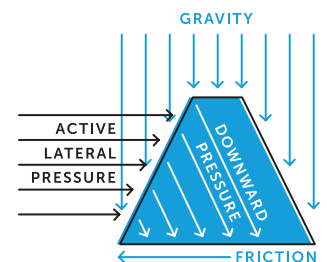
Custom Length

Can Be Connected For Long Runs



Impermeable

Watertight From Seepage & Contamination



Engineered Flood Vents

SMART VENT PRODUCTS, INC.



Flood vents protect enclosures by allowing automatic bi-directional water flow that equalizes hydrostatic pressure.



Insulated 1540-520 in Stainless Steel



Dual-Function Stacker 1540-511 in Powder Coat White



Insulated Wood Wall 1540-570 in Stainless Steel

Dual-Function

STEEL GRAY WHITE BLACK WHEAT CUSTOM



Standard Dual-Function

1540-510 & 1540-511

Automatic ventilation. A bi-metal coil opens & closes the louver as the temperature changes. Stacker models are ideal for large square footages with less openings.



Garage Door Model

1540-524 & 1540-574

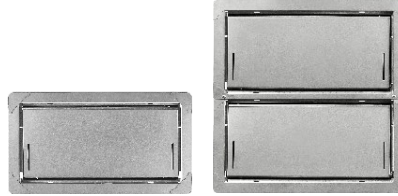
Designed for garage doors or heavily trafficked entry doors. Available in insulated or dual-function models.

Applications

Crawlspaces | Full Height Enclosures | Parking Garages | Storage Facilities | Foyers

Insulated

STEEL GRAY WHITE BLACK WHEAT CUSTOM



Standard Insulated

1540-520 & 1540-521

Ideal for areas requiring flood venting protection but not natural air ventilation. Stacker models are ideal for large square footages with less openings.



Insulated Wood Wall

1540-570

Designed to fit between studs spaced 16" on center. Pre-drilled slots in the four corners of the vent flange make for easy installation.

FEATURES MADE IN THE USA



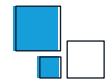
Stainless Steel
316L Marine Grade



Bi-Directional
Water & Debris Flow In And Out



Secure
Internal Floats Keep Door Latched



Custom Sizes

Dimensions to Fit Your Needs



Support
In-House Engineering & Design Assistance



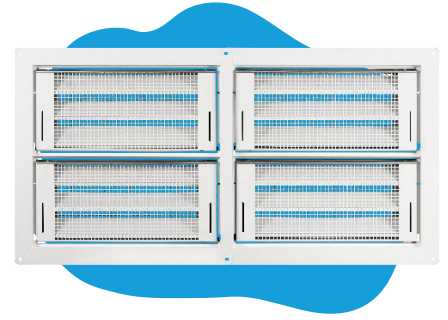
Certified Flood Protection

MODEL	FLOOD COVERAGE	AIR VENTILATION	DIMENSIONS	ROUGH OPENING
1540-510	200 sq ft	51 sq in	16"W x 8"H x 3"D	16 ¹ / ₄ " x 8 ¹ / ₄ "
1540-511	400 sq ft	102 sq in	16"W x 16"H x 3"D	16 ¹ / ₄ " x 16 ³ / ₈ "

MODEL	FLOOD COVERAGE	R-VALUE	DIMENSIONS	ROUGH OPENING
1540-520	200 sq ft	8.34	16"W x 8"H x 3"D	16 ¹ / ₄ " x 8 ¹ / ₄ "
1540-521	400 sq ft	8.34	16"W x 16"H x 3"D	16 ¹ / ₄ " x 16 ³ / ₈ "
1540-570	200 sq ft	8.34	14.5"W x 8.5"H x 3"D	14 ¹ / ₂ " x 8 ³ / ₄ "
1540-524	200 sq ft	8.34	16"W x 8"H x 3"D	16 ¹ / ₄ " x 8 ¹ / ₄ "
1540-574	200 sq ft	8.34	14.5"W x 8.5"H x 3"D	14 ¹ / ₂ " x 8 ³ / ₄ "

Smart Vent Multi-Frames

SMART VENT PRODUCTS, INC.



Customizable one-piece frame with fewer openings for commercial applications or large square footages.



6 x 2 Insulated #1540-150602 Custom Gray

1 Flood Door STEEL GRAY WHITE BLACK WHEAT CUSTOM

Dual Function 1540-0039 Insulated 1540-0239



Custom Configurations Up To A 6 x 3 Multi-frame

2 Frame

Standard Multi-frame

1/8 inch thick angle iron for an extremely sturdy, element-resistant design.

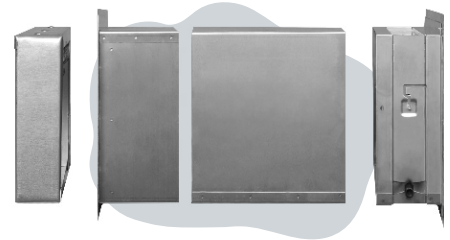
"E" Multi-frame

The same superior design using a lighter steel material to provide a more economical solution.

3 Configuration

MODEL	DESIGN	COVERAGE	"E"				
1540-150102	1W x 2H	400 sq ft	✓	1540-150401	4W x 1H	800 sq ft	x
1540-150103	1W x 3H	600 sq ft	✓	1540-150402	4W x 2H	1600 sq ft	x
1540-150201	2W x 1H	400 sq ft	✓	1540-150403	4W x 3H	2400 sq ft	x
1540-150202	2W x 2H	800 sq ft	✓	1540-150501	5W x 1H	1000 sq ft	x
1540-150203	2W x 3H	1200 sq ft	✓	1540-150502	5W x 2H	2000 sq ft	x
1540-150301	3W x 1H	600 sq ft	✓	1540-150503	5W x 3H	3000 sq ft	x
1540-150302	3W x 2H	1200 sq ft	✓	1540-150601	6W x 1H	1200 sq ft	x
1540-150303	3W x 3H	1800 sq ft	✓	1540-150602	6W x 2H	2400 sq ft	x
				1540-150603	6W x 3H	3600 sq ft	x

Smart Vent Accessories



SMART VENT PRODUCTS, INC.

Accessories & products that pair with Smart Vents to upgrade your energy efficiency, finish a look, meet codes or for installation.



Sealing Kit

Energy Saving



Finishes off interior spaces & lowers energy bills, effectively meeting 2018 Energy Codes.

SINGLE 1540-526

STACKER 1540-526-2



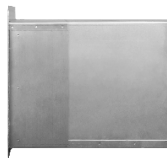
Hurribond™

2-in-1 Adhesive

A fast curing, multi-purpose, waterproof sealant & adhesive used for installing Smart Vents.

WHITE HB-3100

GRAY HB-3200



Trim & Sleeve Kit

Standard & Wood Wall

Provides a clean, finished look on interior walls. Adjustable.

7" - 12.5" 1540-531-12

10" - 15.5" 1540-531-15

STANDARD

4" wall depth 1540-573

9" wall depth 1540-573-9

WOOD WALL



Fire Damper

Standard & Wood Wall

UL Certified. For use in fire-rated walls. 2 or 3-hr options available.

STANDARD 1540-530

WOOD WALL 1540-537

Get In Touch



1 (800) 507 0865 | Floodproofing.com