

Flood Plank System



INVISIBLE FLOOD CONTROL WALL™

**Removable aluminum flood wall
custom-engineered for larger
applications and higher protection.**

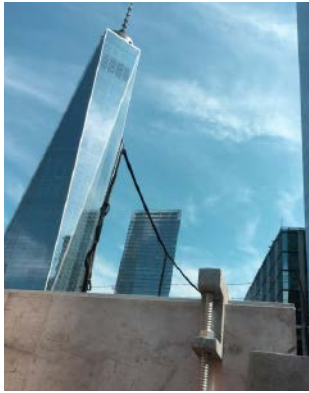
The IFCW system is composed of gasketed aluminum planks and steel posts which are quickly mountable and watertight. It is erected when flooding is imminent and then easily disassembled and stored, leaving an unobstructed view of the area with no protrusions.



IFCW Perimeter System

Applications

Airports | Museums | Riverfronts | Schools | Urban Buildings | Manufacturing Facilities



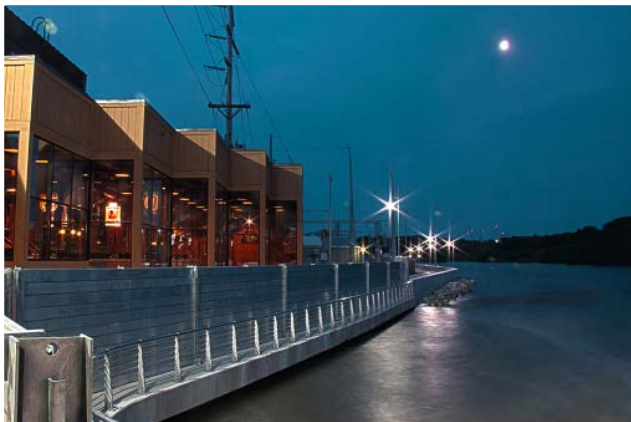
One World Trade Center



Corner Post Installation

The IFCW has extruded aluminum planks that simply stack between the steel supports with a gasket on the “dry” side. During a flood event, the planks fill with water, adding strength and load capacity to the whole system while helping to protect against impact loads.

The IFCW is manufactured and sourced in the United States and has been analyzed and accepted for use by the United States Army Corps of Engineers, and is in use on hundreds of installations across the USA and Canada.



Riverfront Application



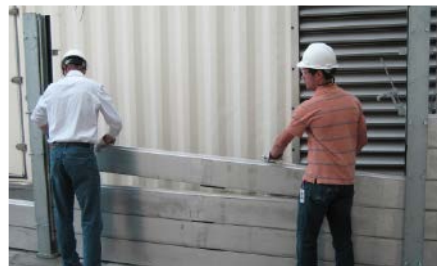
Angle Braces

Due to its stackable design, the IFCW can be deployed in multi-height increments depending on the situation. If the property is expecting minimal flooding or facing time constraints, a lower-height wall could be installed for that instance.



Largest Removable Flood Wall Installation in USA

Holman Field, St. Paul Downtown Airport



Deployment In Progress

FEATURES



Higher Protection

Intermediate Support Design. Heights of 20'+ Possible



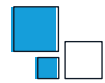
Durable

Support Posts Anchored To Reinforced Foundation



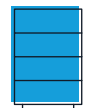
Discreet

Base Plates Minimally Visible. No Protrusions



Customization

Custom Corner Angles. Jogs, Step-Ups, Multi-Heights & Lengths



Storage Solutions

Minimal Storage Space. Optional Pallet & Containers Available.

MATERIAL

Galvanized Steel Posts, Aluminum Planks

PLANK WEIGHT

5.5lb/ft

PLANK LENGTH

Typical 20'

SYSTEM HEIGHT

Up to 20' or More