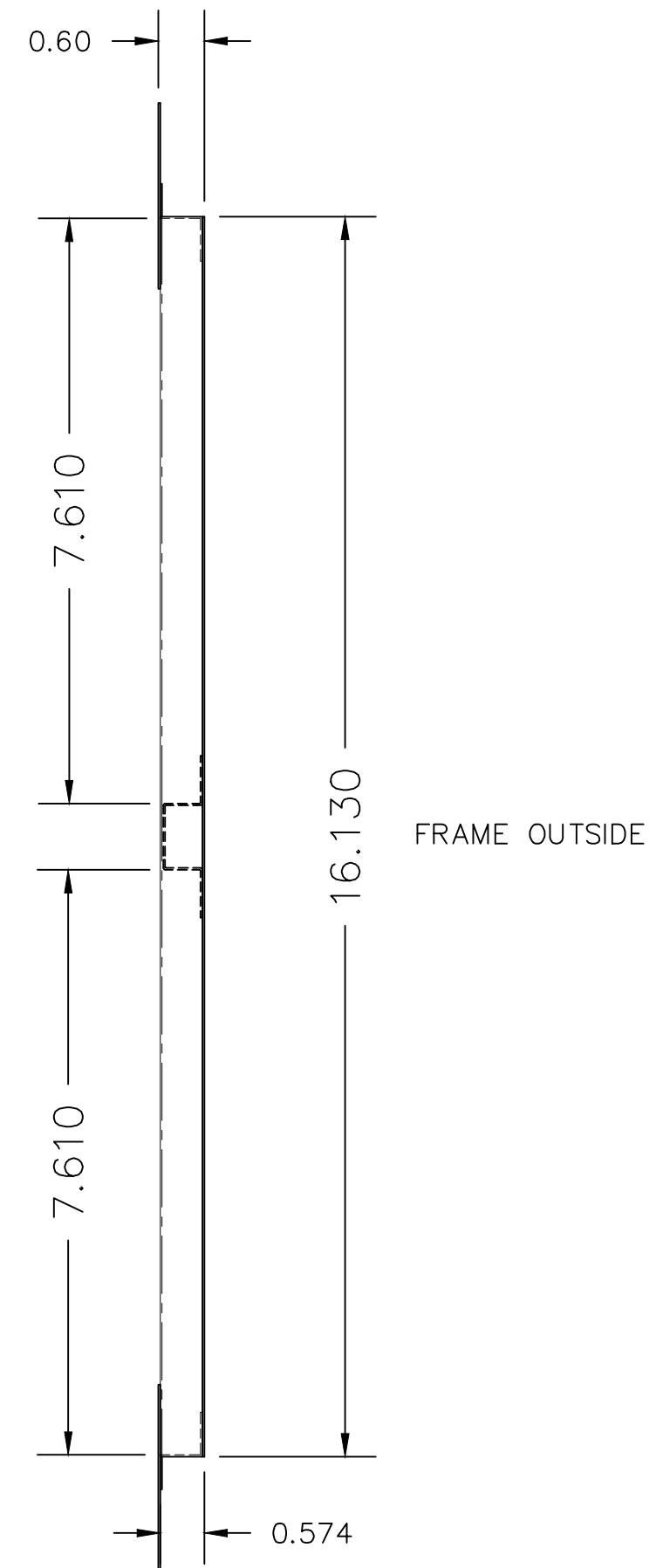
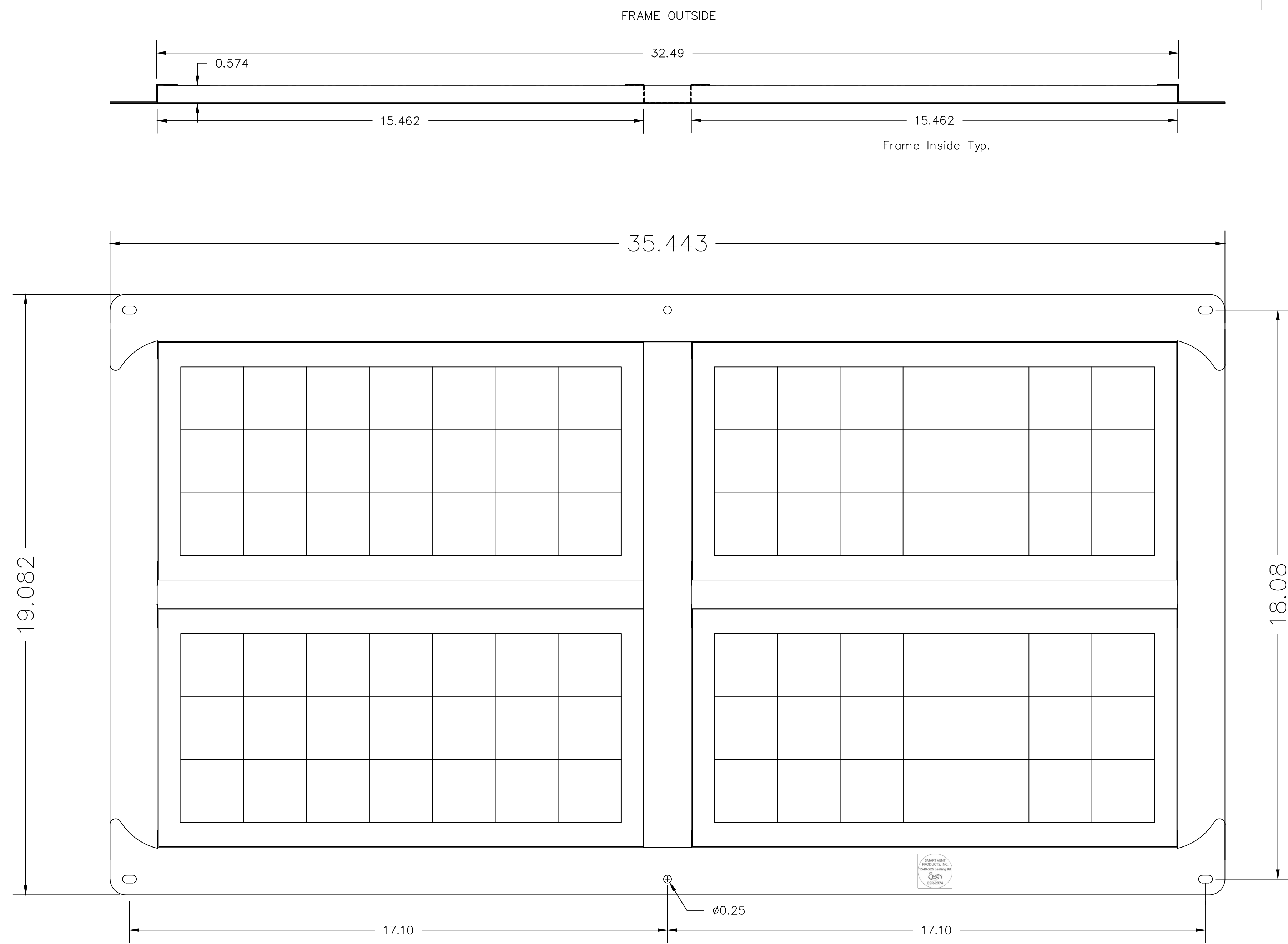


REVISIONS				
ZONE	REV	DESCRIPTION	DATE	APPROVED



SEALING KIT #1540-526-4
 For a rough opening 33.5" X 16.38"
 POWDER COATED WHITE
 304 STAINLESS STEEL

ITEM	DESCRIPTION	QTY

TOLERANCES UNLESS OTHERWISE SPECIFIED
 X.X +/-0.06
 X.XX +/-0.03
 X.XXX +/-0.005



877-441-8368
 SMARTVENT.COM

THE INFORMATION CONTAINED IN THIS DRAWING IS THE SOLE PROPERTY OF SMART VENT INC. ANY REPRODUCTION OR USE OF THIS INFORMATION WITHOUT THE WRITTEN PERMISSION OF SARGENT METAL FABRICATORS IS PROHIBITED.

SMART VENT PRODUCTS, INC
 430 Andbro Dr. Unit 1
 Pitman NJ 08071

2x2 Multi-Frame Sealing Kit Install Instructions

SIZE	FSCM NO.	DWG NO.	REV
DR. BB	DATE. 5/4/20	1540-526-4	SHEET



INSTALLATION INSTRUCTIONS
& DETAILS
MODEL 1540-526-2
FLOOD VENT SEALING KIT-STACKER

877-441-8368
SMARTVENT.COM

INSTALLATION INSTRUCTIONS

1. PREPARE A CLEAN 33-1/2" WIDE BY 16-3/8" HIGH ROUGH OPENING (APPROX. 2 BLOCKS WIDE X 2 BLOCKS HIGH) FOR EACH FRAME. ENSURE THE BOTTOM OF THE ROUGH OPENING IS NO MORE THAN 12" ABOVE THE FINISHED GRADE.
2. TEMPORARILY POSITION THE FRAME IN THE OPENING AND MARK THE HOLE LOCATIONS FOR WALL FASTENERS. REMOVE THE FRAME AND DRILL HOLES IN THE WALL AT MARKED LOCATIONS.
3. APPLY A BEAD OF HURRIBOND GRIP & SEAL OR EQUIVALENT ADHESIVE AROUND THE BACK OF THE FLANGE ON THE FRAME.
4. INSERT THE 2X2 SEALING KIT FRAME INTO THE INTERIOR OPENING, 1540-150202 (2X2 INSULATED MULTI-FRAME) WILL BE INSTALLED INTO THE EXTERIOR OPENING. 1540-150202 WITH INSULATED DOORS MUST BE INSTALLED FOR EXTERIOR WALL APPLICATIONS.
5. WITH THE FRAME NOW IN THE OPENING, CHECK THAT THE FRAME IS SQUARE AND FIRMLY ADHERED. INSTALL ANCHOR SCREWS IN MOUNTING HOLES.

DETAIL SPECIFICATIONS:

MATERIAL: STAINLESS STEEL - Powder Coat White Finish
: **Homasote®** - Medium Density Fiber Board (Cellulose Based)

OPERATION: AUTOMATIC NON-POWERED ACTIVATION AND OPERATION

INSTALLATION:

SECURED W/ AN ADHESIVE (HURRIBOND) AND SCREWS.

HYDROSTATIC RELIEF: Coupled with 1540-521 Insulated Smart Vent to Provide 200 SQ. FT PER VENT (400 SQ. FT. PER THIS 2 UP ASSEMBLY)

NOTE: Wall must be minimum 7" thick to couple 1540-526-4 Flood Vent Sealing Kit (2X2 Model) with 1540-150202 MULTI-FRAME (2X2) Flood Vent.

COLORS: WHITE (STANDARD)

MEETS THE REQUIREMENTS FOR ENGINEERED OPENINGS AS SET FORTH BY:
FEMA, NFIP, ICC, & ASCE
SUPPORTIVE DOCUMENTS, TB 1-08, 44CFR 60.3(C)(5), ASCE 24-14
ICC EVALUATION # ESR-2074