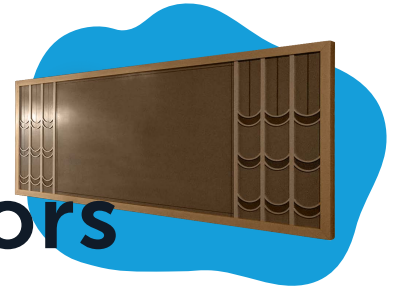


Custom Industrial Flood Gates & Doors



WALZ & KRENZER

Heavy engineered industrial-level flood protection. Flood gates, doors, & hatches that fit any application

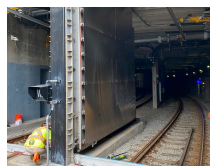
From the simplest flood barrier to the most complex high pressure closure, our engineers design your product based on your requirements. Whether you need complex FEA analysis or 3-D modeling, you can count on a fully engineered, tested product that can fully meet complex specifications.



Flood Gates Protecting NYC Queens Midtown & Hugh L. Carey Tunnels From Flooding

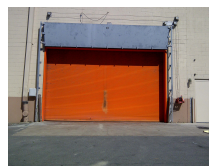
Hinged, Sliding, or Removable Flood Gates

Whether requirements call for permanent, removable, or automatically deploying flood barriers, these custom designed closures provide reliable protection. Closures can be designed to meet FEMA, FM/ANSI 2510, USACE requirements. Project portfolio varies from Museums (Whitney Museum in NYC), government projects (MTA in NYC), NASA (Houston) to Nuclear Plants (Calvert Cliffs).



SIDE-HINGED
Permanent & Ready

Lipseal, Inflatable or Compression Gasket



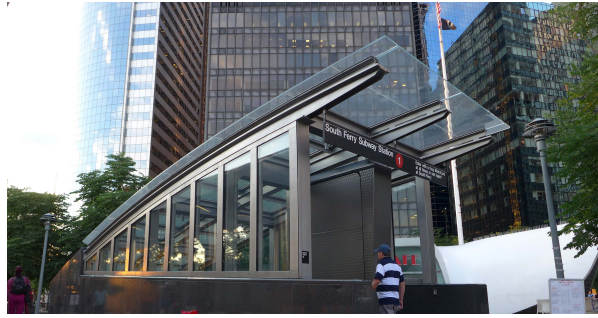
SLIDING
Permanent & Compact

Horizontal or Vertical



REMOVABLE
Can Be Stored

Lipseal, Inflatable or Compression Gasket



South Ferry Terminal, NYC Inflatable Gasket Door

Watertight Doors

Custom watertight doors can be supplied with power operation and most can be specially designed for blast, ballistic, shock, vibration, seismic, chemical, tornado, and high pressure requirements. Single & double panel doors are available.



COMPRESSION GASKET *Raised, High Pressure*

Quick Acting or Individually Dogged



SLIDING *Compact*

Horizontal or Vertical



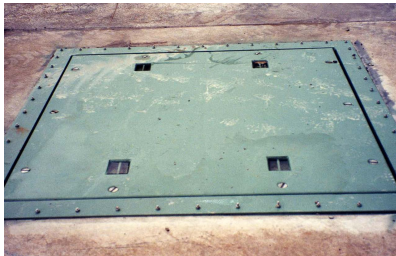
INFLATABLE GASKET *Flush, High Pressure*

Button-activated inflation



OVERHEAD *Roller Curtain*

Button-activated or Automatic



Individually-Dogged Flush Hatch



Manual Drop-Bolt Hatch



NYC Emergency Egress Hatch

Watertight Hatches

Custom hatches can fit any size and pressure requirement. Additional load factors such as wheel loads and point loads from material handling equipment can also be incorporated. Flush and raised configurations are available and are operable from one or both sides. Hatches are sealed utilizing individual dogs, quick-acting handwheels, or drop bolts. Larger hatches may require mechanical opening assistance like gas springs, coil springs, and counter-weights, although power operation is also an option.



RAISED *Visible*

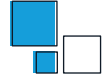
Manual, Counterweighted, or Powered



FLUSH *Discreet*

Manual, Counterweighted, or Powered

FEATURES



Customizable

Engineered To Fit Any Size & Application



User Control

Manual, Full Automation, or Powered



Tested

Meets FEMA, USACE, FM/ANSI 2510 Requirements



Material Options

Aluminum, Mild A36 Steel or 304 & 316 Stainless Steel



Finish Options

Various Paints, No 4 Polish, Or Mill Finish

Utilized in Projects For the US Army Corps of Engineers, US Navy, and State Transit Departments