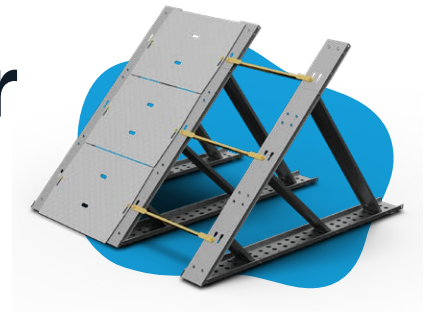


Modular Perimeter Flood Barrier

GEODESIGN BARRIERS



A high-strength, modular barrier system designed to accommodate various obstacles and terrains.

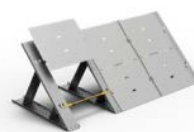
With reinforced high strength steel trusses, diamond plated aluminum panels or sheets, and a waterproof liner, the Geodesign flood barrier is incredibly durable, withstanding debris impact and flooding. This engineered flood barrier provides full height protection that allows for modular setup, compact storage, and quick deployment.



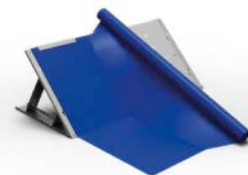
Place, Unfold, & Lock Steel Supports



Connect Steel Supports Using Link Bars



Mount Aluminum Panels onto Supports



Line with waterproof membrane

Applications

Flood Protection | Critical Facilities | Cofferdams | Energy Substations | Containment



With over 500,000 linear feet in 24 different countries protected, this FM approved barrier is a reliable, proven solution. Barriers can be set up on any terrain by one person without the use of any tools or machines. Equipped with collapsible supports, this system is delivered in stackable steel crates, facilitating ideal storage and transportation.



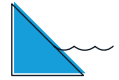
Storage options for each barrier component.

FEATURES



Easy to Deploy

Modular with no fill material



Adaptable

Design conforms to all surfaces



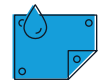
Robust Material

High strength steel and corrosion resistant aluminum



Easy Store + Transport

Collapsible components with stackable crates



Liner Options

High and Low Density Polyethylene



Scientific research & testing ensures products conform to highest standards of safety & property loss prevention.

Heavy Duty



PROTECTION HEIGHT	SECTION WIDTH	BARRIER FOOTPRINT	FOOTPRINT & MAX LINER
48 in	4'	5' 11"	14'
60 in	4'	7' 3"	14'
72 in	4'	8' 10"	22'
84 in	4'	10' 2"	22'
96 in	4'	10' 2"	30'

Industrial



PROTECTION HEIGHT	SECTION WIDTH	BARRIER FOOTPRINT	FOOTPRINT & MAX LINER
24 in	32"	1' 10"	6'
32 in	39"	2' 11"	10'
40 in	39"	3' 9"	10'
48 in	39"	4' 9"	13'